

# VAN 1

# 3.83 MI | EASY

NAMED AFTER: JENNY H.

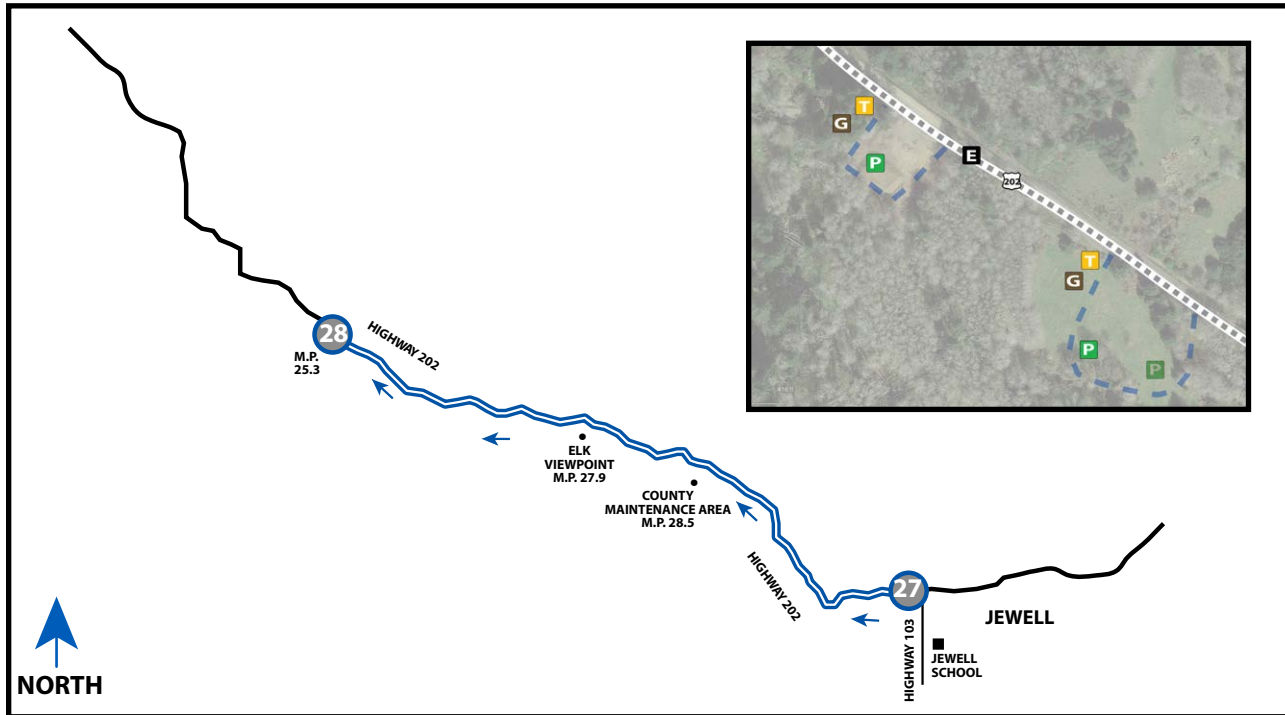


**LEG DESCRIPTION:** Gradual uphill on paved road. Narrow HWY with limited shoulder.

**EXCH 28 ADDRESS:** near Lee Wooden County Park Jewell, OR m.p. 25.3

**GPS:** 45.954195, -123.573884

**NOTES:** Cell phone coverage unreliable until after Leg 32. Route passes by Elk Preserve. **NO stopping at, use of bathrooms, or sleeping at Elk Viewpoint.**



## DIRECTIONS FROM EXCH 27 TO EXCH 28

- 0.00 Exchange 27 (Jewell - HWY 202)
- ↑ 0.82 County Maintenance Yard on left
- ↑ 2.35 Elk Viewpoint on left
- 3.83 Exchange 28 (HWY 202 m.p. 25.3)

## EXCHANGE NOTES

Parking: In large field along left side of the road. Very narrow...be careful! During high congestion, Exchange 28 parking is limited to **VAN 1 ONLY**.

Provisions: No

Fuel: No

**NO STOPPING ON HIGHWAY TO PICK UP OR DROP OFF RUNNERS. IMMEDIATE DQ.**

