



# VAN 1

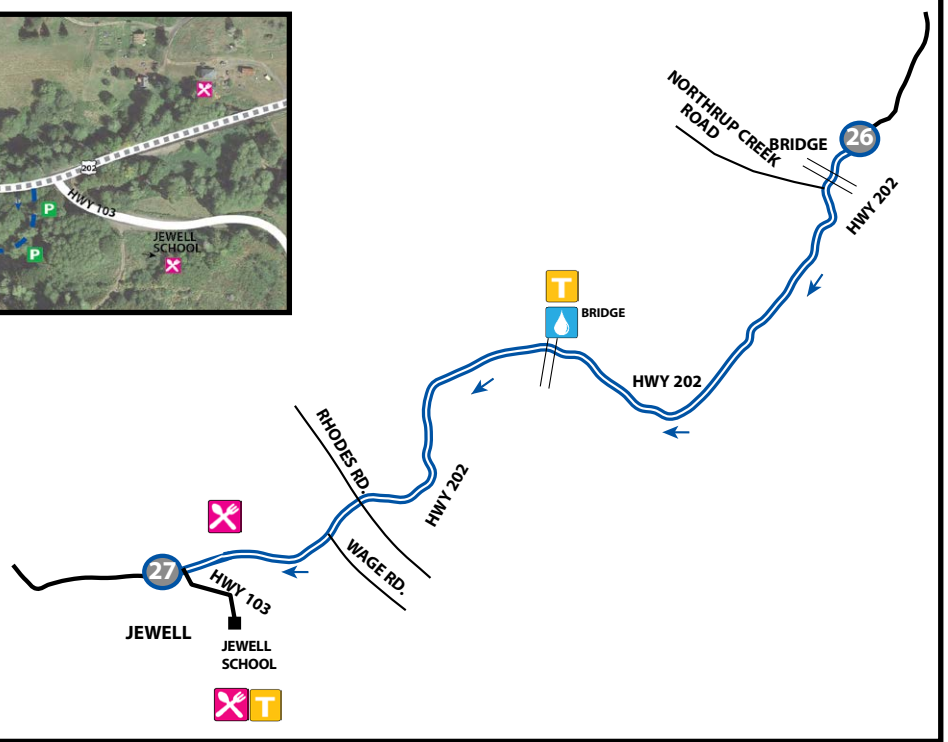
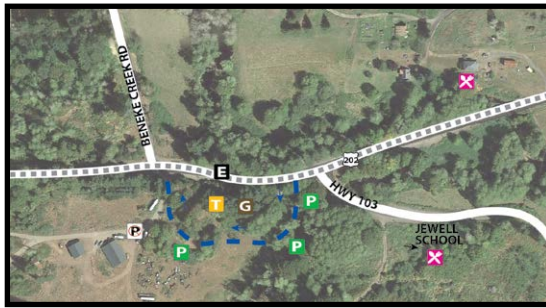
# 6.36 MI | MODERATE

**LEG DESCRIPTION:** Rolling hills on paved rural country road.

**EXCH 27 ADDRESS:** near 79156 HWY 202 Jewell, OR 97138

**GPS:** 45.933928, -123.5061

**NOTES:** Cell phone coverage unreliable until after Leg 32.



**COURSE FUNDRAISER**  
**JEWELL SCHOOL PTO**  
 FRIDAY 6:00PM - SATURDAY 2:00PM  
 SHOWERS: Yes  
 SLEEPING SPACE: Quiet, indoor sleeping area  
 FOOD: Oatmeal, bagels & cream cheese, eggs, sausage, pancakes; sandwich bar, assorted snacks & other lite fare  
 BEVERAGES: Coffee, tea, hot chocolate, water  
 MASSAGES: SAT 6:00AM - 12:00PM



**DIRECTIONS FROM EXCH 26 TO EXCH 27**

- 0.00 Exchange 26 (HWY 202)
- ↑ 0.60 Northrup Creek Rd
- 3.40 Water Station
- ↑ 3.40 Nehalem River Bridge
- ↑ 5.11 Rhodes Rd
- ↑ 5.46 Wage Rd
- ↑ 6.30 HWY 103
- 6.36 Exchange 27 (Jewell - HWY 202)

**EXCHANGE NOTES CONTINUED**

Provisions: Course Fundraisers  
 Fuel: No

**COURSE FUNDRAISER**  
**ELSIE VINEMAPLE FIRE & RESCUE**  
 FRIDAY 6:00PM - SATURDAY 12:00PM  
 FIRST AID AND EMERGENCY MEDICAL SERVICES AVAILABLE

**EXCHANGE NOTES**

Parking: Entrance for van parking is before the exchange as directed by volunteers in field. Upon exiting, left turn only.

